

ComfoAir 70

Installation instructions for round wall mounting pipe L = 900 mm



Intended purpose

The round wall mounting pipe with an external diameter of 250 mm is made of PVC and is supplied with two blanking plugs (Fig. 1). It is used to hold the ComfoAir 70 ventilation unit. A core hole measuring \varnothing 270 mm must be drilled in the external wall for installation purposes. The final wall thickness must be between a minimum of 275 mm and a maximum of 900 mm.



Fig. 1 Scope of delivery for round wall mounting pipe

Preparatory work

Choose an appropriate installation location in an external wall. Make sure that there is enough space for objects and for maintenance work to be carried out (at least 32 cm on the left, 42 cm on the right and 55 cm at the top, relative to the axis of the PVC wall mounting pipe when it is installed). At the front, make provision for an 80 cm clearance – relative to the inside of the external wall – so that the ComfoAir 70 can be removed from the PVC wall mounting pipe.



The location of the ComfoAir 70 must meet all local and national code requirements. Ensure that proper clearance is provided to other fixtures in bathrooms or other "wet" rooms!

Core hole drilling

Vertical walls are required for installing the ComfoAir 70 correctly.



The hole diameter must be at least 270 mm. Make sure that the hole axis is horizontal (Fig. 2).

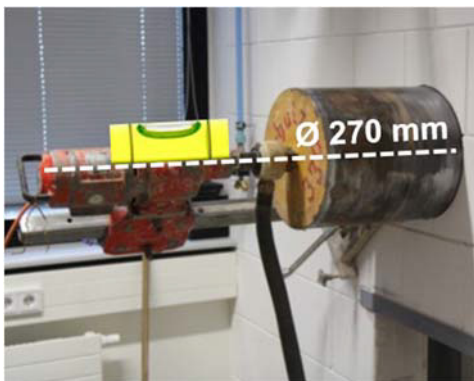


Fig. 2 Drilling the core hole

Installing the wall mounting pipe

Insert the PVC wall mounting pipe into the core hole and make sure it is in a horizontal position (Fig. 3). Fix it in place in the hole using appropriate equipment. Use only non-swelling adhesive or installation foam to fix it in place.



Make sure that the pipe axis is horizontal and that the circular shape of the pipe is maintained (the internal diameter must not deviate by any more than +/- 1.5 mm from a circular shape).

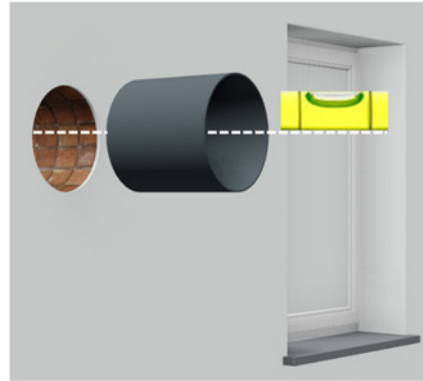


Fig. 3 Pushing in the wall mounting pipe

Before installing the ventilation unit, modify the PVC wall mounting pipe so that the end of it is flush with the surface of the façade or interior wall (Fig. 4). To do this, trim the pipe using a suitable tool until the end of it is flush with the finished wall.

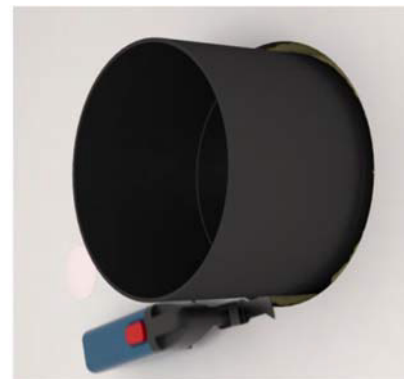


Fig. 4 Modifying the wall mounting pipe to make it flush

Using suitable sealant, seal the inside and outside of the wall connection around the PVC wall mounting pipe (Fig. 5). After installation, reinsert the blanking plugs at both ends of the PVC wall mounting pipe.



Fig. 5 Sealing the wall mounting pipe